



WOOMIN TECH CO.,LTD.

Introduction

www.woomintech.com



WOOMIN
Technology Co.,Ltd.



Greeting from the CEO

Period to prepare for the coming future supplier of Industrial Plants
WOOMIN TECH Co., LTD.

Vision

Management Policy

Respect for human dignity and human resources to implement the management
Continuous R & D investment to prepare for the future management
Customers to concentrate all efforts for the success of the management
Industry-leading, world-class companies to pursue a business

Quality Policy

Establishment of quality management system of the sector employees
Level of quality control globalization efforts
Sustainable development through education
Continuous quality improvement activities conducted

Environment Policy

The priority assigned to environmental safety concerns
Integrated management of environmental safety and quality management systems
Continuous improvement activities related to environmental safety
Production of safe and environmentally friendly

Woomin Technology Co., Ltd. is a supplier to prepare for the coming era of the future

1. Offshore plants system (Bulk & Mud Treatment)
2. Plant feed (high pressure feed, low pressure feed, powder feed) system
3. Environmental Plant Systems
4. Coating plant systems
5. Special coating (powder, liquid coating)

Technical skills, and in the meantime, based on our experience and knowledge to the world strive to be the best. Thank you with all your mind. Rewards you for your interest in the company will make an effort.

C.E.O. Hwang Jong-Deok

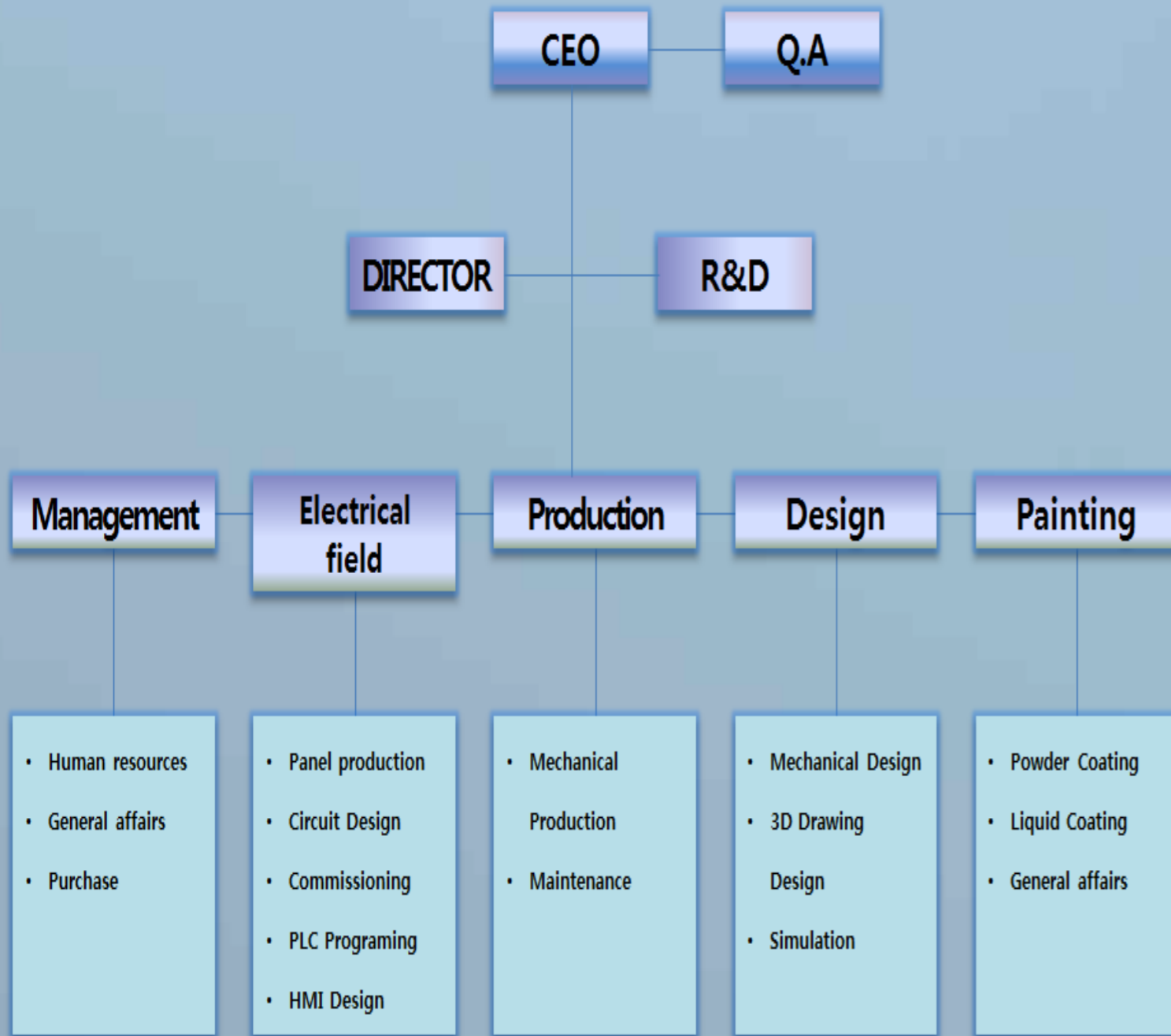
Overview

| | |
|--------------------------|----------------------------------------------------------------------------------------------------------------------------------------------------------------------------------------------------|
| Date of Establishment | July 16, 1999 |
| Address | 1st- 14, Noksansandan 261-ro 13beon-gil, Gangseo-gu, Busan, Korea 2nd- 62-6, Noksansaneopjung-ro, Gangseo-gu, Busan, Korea 3rd- 39, Noksansaneopbuk-ro 313beon-gil, Gangseo-gu, Busan, Korea |
| Business Area | Land, Sea, Environment Plant Equipment High pressure, low pressure powder Conveying System Powders, liquids, special coatings and coating equipment |
| Capital | 1.3 billion won |
| Sales | 7.3 billion won(2012 year) |
| Homepage | www.woomintech.com |
| Contact | Tel.+82-51-266-7160 Fax,+82-51-264-5606 |
| Ground | 6,940m ² |
| Manufacturing Facilities | 5,200m ² |
| Office | 1,100m ² |
| Personnel working | 37 |

History

| | |
|------|------------------------------------------------------------------------------------------------------------|
| 1999 | Established WOOMIN |
| 2009 | New Construction 1ST Factory Woomin Technology |
| 2011 | Woomin Technology Co., Ltd. was established Woomin Technology Co., Ltd. was established the 2ND factory |
| 2012 | Woomin Technology Co., Ltd Established R & D Center ISO9001 certification |
| 2013 | Woomin Technology Co., Ltd. was established the 3RD factory |

Organization



Certification

ISO 9001:2008

2012년 Quality Management System ISO 9001: 2008



Certificate of Patent

1. Air booster powder transfer tube transport system
2. Feeder, vibrating screen, fine particle classification
3. Multi PRESS for card production – Control PRESS for linear cooling



Business Item

■ Mud Treatment System

Shale Shaker / Desander / Desilter / Vacuum Degasser Decanter Centrifuge / Mud Cleaner / Mud Pump / Mud Agitator Mud Gun / Jet Mud Mixer / Mud Tank

■ Powder coating equipment

Pretreatment equipment, Oil Skimmer, uninterruptible powder booth, cyclone, powder center, Les Thief Locator, drying equipment, trolley conveyors, driving unit, the take-up unit, automatic lubrication device

■ Liquid coating equipment

ESD and antistatic device booth, painting booth, robotic systems, IR, baking, drying, such as placing

■ Storage facilities

Various steel and sus Hopper, ssail system, unloading chute, air purge, the air chamber, the vent filter

■ High pressure Conveying System

Booster (patented product), plugs, Sarah pumps, transfer tank, damper valve, target at, chrome steel tubing, Pillar valve, etc

■ Low-pressure feed

Lower ring and Roots Blower System

■ Conveyor Systems

Belt conveyors, bucket elevators, screw conveyors, vibrating feeders, Flow conveyor, air conveyor Saffron

■ Crushing, grinding equipment classification

Ball mill, hammer crusher, jaw crusher, roller crusher, pin crusher, Turbo Fire class(dry), air separators

■ Screening equipment

Twist the screen, vibrating screens, magnetic separators

■ Mixing

Ribbon mixer, double pedeul mixer, drum mixer, cone blender, mixer weightlessness

■ Various gate device

Dew Gator lighting, dome valve, pillar valves, dampers, knife gate, etc.

■ Dust collection equipment

Bag filter dust collector, cyclone, bed, dust collector, AC tower, etc.

■ Waste water treatment facility

Filter presses, clarifier, injury, Joe, sand filter, carbon filter, waste water purification

■ Special coating

Powder coating, liquid coating, fluorine coating, specialty coatings

■ Electrical Parts

Factory automation systems, HMI, PLC, installation and commissioning, etc.

Major career

Domestic

POSCO

SAMSUNG 삼성물산

LG전자

DAEWOO E&C

K water

DOOSAN

stx
Construction

KCC

CEPHAS PIPELINES CORP.

Major career

Overseas

TRACTEBEL Engineering
GDF SUEZ



SIEMENS

**PB PARSONS
BRINCKERHOFF**
125 YEARS

GAR
Creating tomorrow today

| NO | CUSTOMER | CONTENTS | DATE | NOTE |
|----|-------------------------------|----------------------------------------|----------|-------|
| 1 | Hanbal Co., Ltd. | PALLETIZER | 2000. 01 | Korea |
| 2 | Woosung electronic | TAPE LINE | 2000. 06 | Korea |
| 3 | Hanbal Co., Ltd. | Automatic injection wrappers balborin | 2001. 01 | Korea |
| 4 | WMC | AUTO FILLING M/C | 2001. 09 | Korea |
| 5 | Hanbal Co., Ltd. | DRUM FILLING M/C | 2001. 11 | Korea |
| 6 | JOTUN Co., Ltd | AUTO FILLING M/C 외 | 2002. 03 | Korea |
| 7 | JOTUN Co., Ltd | AUTO FILLING M/C | 2002. 11 | Korea |
| 8 | Sewonhwasung | DRUM FILLING M/C | 2003. 01 | Korea |
| 9 | KCC Co., Ltd. | Fine crushing equipment classification | 2003. 08 | Korea |
| 10 | HwaninMetal | A. M. F Drum Cooler LINE M/C | 2003. 08 | Korea |
| 11 | Renault Samsung Motors | SM7 Engine feed LINE | 2003. 09 | Korea |
| 12 | Sungwoo Hightech | 1000CC Automatic Cup LINE | 2003. 11 | Japan |
| 13 | Nambu Industrial Co., Ltd. | Molding machine F. B. M | 2004. 02 | Korea |
| 14 | STX Co., Ltd. Metal | 40TON Mixer Carts | 2004. 04 | Korea |
| 15 | STX Co., Ltd. | Reproduction equipment line | 2004. 04 | China |
| 16 | Jinyoung Metal | CO2 LINE & Mixer | 2004. 07 | Korea |
| 17 | Hyundai Steel | Painter booth equipment | 2004. 10 | Korea |
| 18 | Hyundai Steel | Material transport line | 2004. 12 | Korea |
| 19 | T.M.K | SHELL LINE | 2005. 01 | Korea |
| 20 | Jeahong Metal | CO2 LINE & Mixer | 2005. 02 | Korea |
| 21 | STX Co., Ltd. | Pneumatic Conveyor 4SET | 2005. 03 | Korea |

| NO | CUSTOMER | CONTENTS | DATE | NOTE |
|----|--------------------|-------------------------------------------------------------------------|----------|--------|
| 22 | STX Co., Ltd. | PANEL Replacement | 2005. 04 | Korea |
| 23 | Hankuk Fiber Group | Automated foam LINE | 2005. 05 | Korea |
| 24 | Hankuk Fiber Group | Load Servo foam LINE | 2005. 08 | Korea |
| 25 | LG | Glass manufacturing and weighing, conveying equipment | 2005. 12 | Korea |
| 26 | DooSan Co.,LTD. | Paint Booth and AC TOWER | 2006. 04 | Korea |
| 27 | Gosung | POSCO-NON-RETURN V/V- hydraulic unit | 2006. 08 | Korea |
| 28 | STX Co., Ltd. | VACUUMRECOVER, Return line automation equipment | 2006. 10 | Korea |
| 29 | STX Co.,Ltd. Metal | SHOTBLAST MC & Cooler sand and dust collection equipment | 2007. 03 | China |
| 30 | Sejin | NON-RETURN V/V-4SETS | 2007. 05 | Korea |
| 31 | Koreazinc Co.,LTD. | PCB Substrate automated sampling equipment | 2007. 06 | Korea |
| 32 | Seoulshot | Hydraulic roller crusher and recovery facilities -20SET | 2007. 07 | Russia |
| 33 | Koreazinc Co.,LTD. | First and second feed lines and air classification equipment, disk Lava | 2007. 08 | Korea |
| 34 | kdceratech | Silica classification, the low-pressure feed equipment | 2007. 09 | Korea |
| 35 | Cephasvalve | HPU-NRV CONTROL-39 SET | 2008. 04 | Saudi |
| 36 | Koreazinc Co.,LTD. | Crushing and classifying plant | 2008. 05 | Korea |
| 37 | Fluen | NRV CONTROL TB BOX JEBEL-ALI | 2008. 07 | Dubai |
| 38 | Seoulshot | Line induction | 2008. 08 | Korea |
| 39 | Cephasvalve | Hydraulic unit-SHUAIBA-NORTH | 2008. 08 | Saudi |
| 40 | STX Co., Ltd. | Sand treatment LINE | 2008. 11 | China |
| 41 | STX Co., Ltd. | Pneumatic equipment silica classification | 2008. 11 | China |

| NO | CUSTOMER | CONTENTS | DATE | NOTE |
|----|---------------|------------------------------------------------------------|----------|---------|
| 42 | STX Co., Ltd. | Wastewater treatment and PAINT BOOTH | 2008. 12 | China |
| 43 | SK | FLY ASH PENUMATIC SYSTEM | 2009. 05 | Korea |
| 44 | Hyundai | NRV CONTROL-MARAFIQ | 2008. 12 | Saudi |
| 45 | Cephasvalve | NRV CONTROL-C31R | 2009. 02 | Saudi |
| 46 | Daewoo | NRV CONTROL-Guards and attempted rata Bang | 2009. 08 | Libya |
| 47 | Posco | Line treatment and dehydrator | 2009. 12 | Korea |
| 48 | KCC | Silica sand for water treatment and purification equipment | 2010. 02 | Korea |
| 49 | STX Co., Ltd. | Heat Exchanger - Gas Cooler 1500CM-2HEAD | 2010. 10 | Korea |
| 50 | STX Co., Ltd. | 150TON Carts-3SET | 2010. 11 | China |
| 51 | STX Co., Ltd. | Wastewater facilities and scroll lever 15TON | 2010. 10 | Korea |
| 52 | Sinpung | Automatic robot servo terminal processing | 2010. 12 | Korea |
| 53 | Posco | Centrifugal separator | 2011. 01 | Korea |
| 54 | Changpung | Sand processing line construction | 2011. 02 | Vietnam |
| 55 | Posco | SS Dehydrator | 2011. 02 | Korea |
| 56 | Jotun | SILO Facility Improvement Corporation | 2011. 03 | Korea |
| 57 | Pogis | LAMINATION PRESS | 2011. 05 | Korea |
| 58 | Gcchem | Crushing the ore processing facility | 2011. 05 | Korea |
| 59 | RIST (POSCO) | SILO And material transport device | 2011. 06 | Korea |
| 60 | ChangJu | Belt Conveyor Making installation work | 2011. 06 | Korea |

